

MCE Group



www.mce.sa.com

Tel.: +966 13 34 15 355 (Head Office)

Fax: +966 13 34 12 722 (Head Office)

Tel.: +966 13 34 19 747 (Workshope)

E-mail: mce_rentals@yahoo.com

Message From Our President



Mohammad Hassan Al-Naimi (MCE) has been involved in the provision of crane and heavy equipment rental business since 2008 in the eastern region of KSA and steadily but surely MCE has grown into a well-refined crane and heavy equipment provider over these past years. Strategically stationed here in Jubail Support Industries, we aim to fulfill the needs and requirements of our valued customers of fast and reliable service.

Mohammed Hassan Al-Naimi Contracting (MCE) has worked hard to develop a reputation for integrity, fairness and quality work. We are proud of this reputation and the success of our company. We never lose sight of the fact that these accomplishments were achieved because of our Valued Customers and the dedication and hard work of the MCE team.

Thank you for your unwavering support, we will continue these endeavors and efforts to maintain the trust and integrity we have achieved, and to improve the support standards our customers have come to expect.

Thank you and Best regards
Mohammed Hassan Al-Naimi

Message From Our Trading General Manager



Mohammad Hassan Al-Naimi (MCE) is a young company. We were involved early 2008 and are based at Jubail, Saudi Arabia. We grew with the projects in the rental of cutting edge heavy equipment and Light equipment and still actively participate in the market. We have been enjoying our growth, but I would like to assure you that we will continue to provide the high quality of the products and services we deliver to our clients.

We are proud that we are able to offer genuinely superior equipment brands and 24 hour service to our customers, and we will continue to ensure that our products remain in high quality standards that our customers have come to expect. However, we also understand that product superiority alone is insufficient. We aim to not only provide the best product, but also ensure that it is easier, faster and cheaper than any potential alternatives.

We understand that projects have a strict time schedule, and understand the viability of the equipment. To eliminate the difficulties as far as possible, we work with our clients to train and support their use of our services and products. This goes beyond training courses and on-call help. We look to create long lasting partnerships with our clients and are willing to assist with issues as they occur, to be asked for advice regarding potential projects and to customize our services and products as desired.

We hope that we will be able to work with you in the future, and to provide you the greatest possible value for your equipment needs. We thank you for taking the time to read this and your continued support.

Thank you and Best regards
Mohammad Said Abu Jazar

AN OVER VIEW

MCE Rentals is one of the new establishments that is competing to be the best in Equipment renting field,

through our dedicated efficiency, effectiveness and hard work. MCE Rentals provides a wide range of equipments, covering a diverse variety of light and heavy equipments.

ABOUT US

We at Mohammed Hassan Al-Naimi Contracting Establishment (MCE) are proud of the excellent reputation we have earned through the provision of high quality products. For more than seven years we have grown to become one of the largest equipment rental suppliers in the region, servicing the unique requirements of the market, with the most diverse range of equipments available anywhere in the region.

Through a network of clients in Saudi Arabia, MCE is the preferred supplier to a host of companies in the field of oil, gas, construction, mechanical and electric equipments. In addition to the being the largest single source of equipment for our clients, we deliver a genuine 24/7 emergency service response, backed up by a team of highly dedicated professionals, focused on keeping us in the market's leading position, which we intend to maintain.

Here at MCE we guaranty our focus is always customer service and satisfaction, servicing at every step of the rental process. This process starts with having a clear understanding of client's needs, which leads to developing innovative solutions to meet the specific requirements of all our clients.



OUR VISION

Our Vision towards Successful business is to maintain this continuous efforts and support to become an excellent supplier of high quality products. We will fulfill our commitments to our client's and consultant's satisfaction. We are dedicated to the continuous improvements, innovations and highest standards of business. The management of the group has a clear policy to achieve the highest standards and expand the business in multi direction

OUR MISSION

Our commitment to quality customer service is foremost, we believe in doing the job right the first time while meeting our commitments and standing behind everything we do. We work as a team with our Clients, MCE Management and other contractors to make each project successful and cost effective.

Since 2007, Mohammed Hassan Al-Naimi Contracting (MCE) has worked hard to develop a reputation for integrity, fairness and quality work. We are proud of this reputation and the success of our company. We never lose sight of the fact that these accomplishments were achieved because of the dedication and hard work of our team.



OUR QUALITY POLICY

Mohammed Hassan Al-Naimi Contracting Establishment (MCE) is committed to providing excellent service in every job, ensuring the satisfaction of our valued customers. Determined, we're always putting our best foot forward to accomplish our quality Objectives and Systems for its continuing suitability and for continual improvement of the Quality Management System, with the aim of enhancing customer satisfaction.

We aim to develop leaders and to train, encourage and motivate employees throughout the organization of the quality management system, communication and understanding of the quality policy at all levels is exceeded and achieved, to further enhance the quality of our product and service.

The key is consistency of quality service; with that key in mind we designed a system to ensure that both our company and customers can be confident that we can meet customers' requirements on every occasion. Extensive quality tests are conducted from the very initials stage of procurement before dispatching any product to the market. The responsibility of meeting this commitment to quality is shared by every employee.



OUR SAFETY POLICY

To achieve this higher level of quality, customer's and employee's health and wellbeing is very important to us, and is comprehensively planned by our management. Customers and employees feel a sense of safety and empowerment when we provide training, instruction, information and supervision to enable them to perform their roles safely and efficiently.

Vigorous training and regular mass drills prepare our employees for any crisis. We take in to account workplace hazards, consulting with employees and our valued customers at every step of the rental period to ensure safety for the employees and the product. Reviewing employee's health isn't enough, we go a step further and examine the integrity of all equipments, and there condition on a regular bases insuring that a workplace hazard will not occur.



OUR RENTAL SERVICES

We assure our clients of a trustworthy service in the field of Equipment Rental Service. We provide both heavy and light Industrial and construction equipment and temporary site facilities on rental and contractual basis.

such as:



Crane (50 Tons – 1200 Tons)



Forklift (3 Tons – 15 Tons)



Welding Machine (400 AMPS – 700 AMPS)



Generator (50 KVA – 1000 KVA)



Man Lift (16m – 40m)



Tower Lights (4000 Watts)



Diesel Tanker (7,000 - 20,000 Ltrs)



Air Compressor (185 CFM – 750 CFM)



Pick up (Double Cabin / Single Cabin)



Trailer (Low Bed / Flat Bed)



Boom Truck (5 Tons – 17 Tons)



Message From Our Contracting General Manager

At Mohammed Hassan Al-Naimi Contracting (MCE), it is our mission to deliver our proactive care and philosophy to you, our customers, by focusing on promoting your long term Support. For over 8 years, we have practiced this philosophy. From our very beginning in Jubail office and moving fast in the kingdom, we have pioneered the practice of engineering focusing on timeless elegant designs and a sturdy long lasting structure.

I am excited to lead this company to its first decade of business. As the world changes, so does our company – but always for the better. We have recently significantly improved our scheduling system through “Simple Scheduling” – an approach that allows us to offer more task types every day. This change improves your customer experience by completing as much work as possible in one day, reducing costs, and reducing your time needed through micro-management. The future looks bright for Mohammed Hassan Al-Naimi Contracting (MCE) and I look forward to ongoing improvements to enhance our product and experience.

Thank you and Best regards

Eng. Tarek Ali Abd El Aziz Motaweah

Madeena Tower Project



- * Located at jubail downtown city – kingdom of Saudi arabia
- * Owner : A.C.T. group
- * Contractor : MCE. group
- * Project Constraction Coast : 48,000,000 s.r

Reinforced Concrete Column

www.mce.sa.com

Madeena Tower Project



Hourdi Slab Used in the Project

The resistance of these blocks is extremely high, and provide for very strong support, as these blocks are hollow from the inside they create roofs which are more comfortable under a hot climate.



Scaffolding System & Shuttering for Slab



Sky Lights

The primary benefit and purpose of roof skylights is to let more natural sunlight enter the building. With this increase in the amount of natural sunlight, it will also allow heat to enter, while at the same time reducing energy costs.

Al Khobar Project



- * Located at Al Khobar city AlOlaya Area – kingdom of Saudi arabia
- * Owner : A.C.T. group
- * Contractor : MCE. group
- * Project Constraction Coast : 45,000,000 s.r



Slab Shuttering Form

Al Hamra Mosque



* Located at jubail AlHamra Area downtown city – kingdom of Saudi arabia

* Owner : A.C.T. group

* Contractor : MCE. group

* Project Construction Coast : 5,000,000 s.r



Jubial Labor Camp



* Located at jubail downtown city Aurafi Area – kingdom of Saudi arabia

* Owner : A.C.T. group

* Contractor : MCE. group

* Project Construction Coast : 12,000,000 s.r

Main Head Office



- * Located at jubail RC city – kingdom of Saudi arabia
- * Owner : A.C.T. group
- * Contractor : MCE. group
- * Project Renew& Maintenace Coast : 1,300,000 s.r

Yanbu Factory



- * Located at Yanbu city Industry Area – kingdom of Saudi arabia
- * Owner : A.C.T. group
- * Contractor : MCE. group
- * Project Constraction Coast : 11,000,000 s.r

Madena Build



- * Located at jubail downtown city Madina St. – kingdom of Saudi arabia
- * Owner : A.C.T. group
- * Contractor : MCE. group
- * Project Maintenance Coast : 1,500,000 s.r

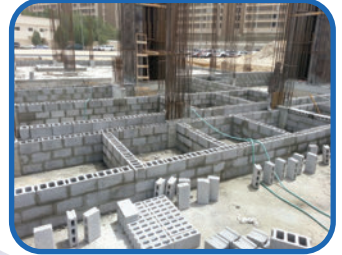
Damamm Build



Concrete Column with Steel Reinforcement



Scaffolding work used o support during the building process.



* Located at Damamm city 1st street – kingdom of Saudi arabia

* Owner : A.C.T. group

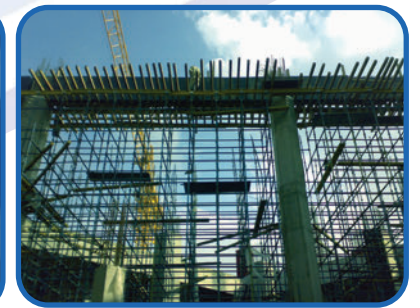
* Contractor : MCE. group

* Project Construction Coast : 9,000,000 s.r

Damamm Tower



Retaining Wall Forms



Scaffolding used in Damamm Tower.

* Located at jubail downtown city – kingdom of Saudi arabia

* Owner : A.C.T. group

* Contractor : MCE. group

* Project Construction Coast : 35,000,000 s.r

Equipment And Tools



Concrete column Sismo test tool to test the strength of the column for longevity and sturdiness against the elements.



Table Forms



Retaining wall Forms

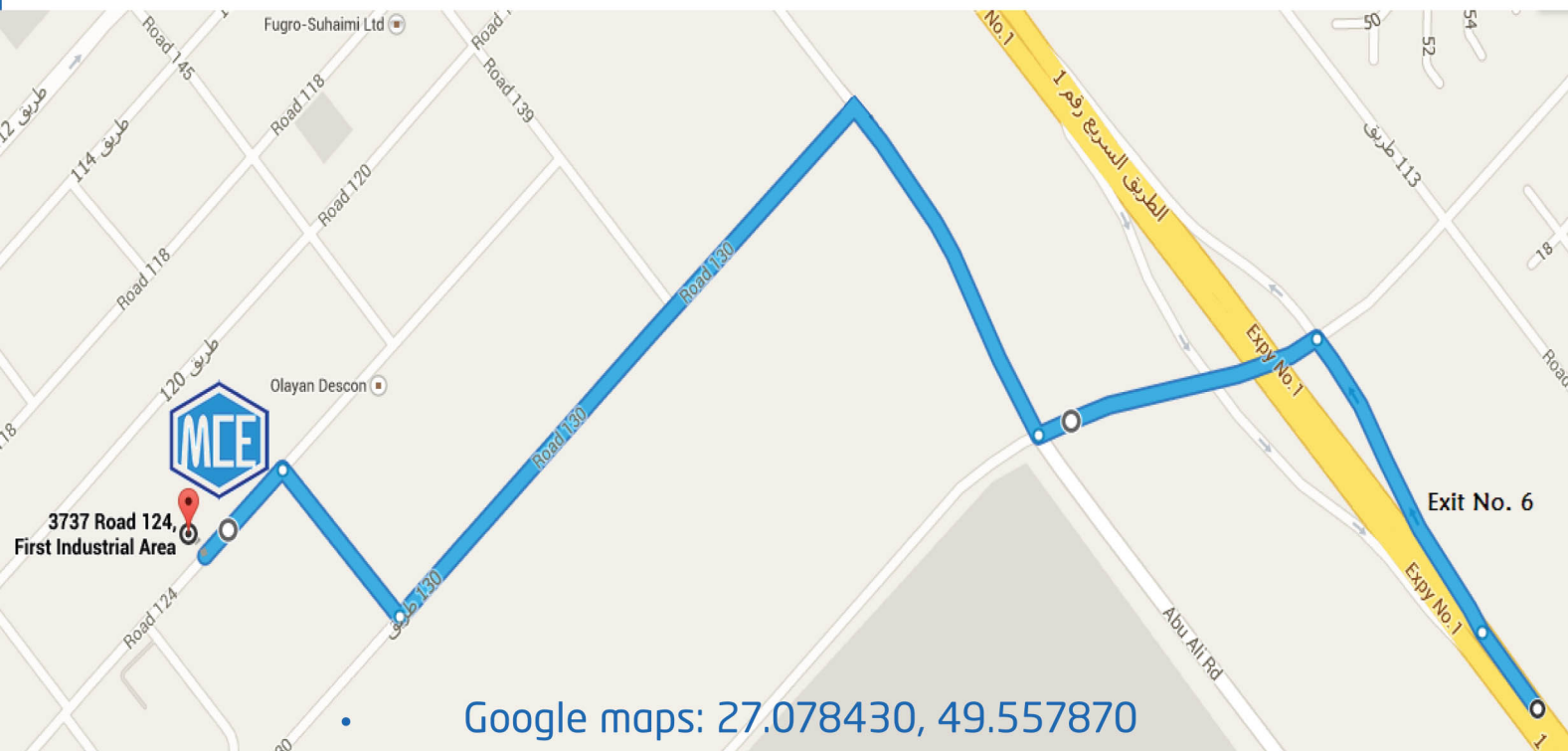


Sliding Steel Forms



Column Forms

www.mce.sa.com



P.O.Box 11506 Al Jubail 31961
Jubail Industrial, Support Industries 1, Road 124
Kingdom of Saudi Arabia
Tel.: ☎966 13 34 15 355 (Head Office)
Fax: ☎966 13 34 12 722 (Head Office)
Tel.: ☎966 13 34 19 747 (Workshope)
E-mail: mce_rentals@yahoo.com

